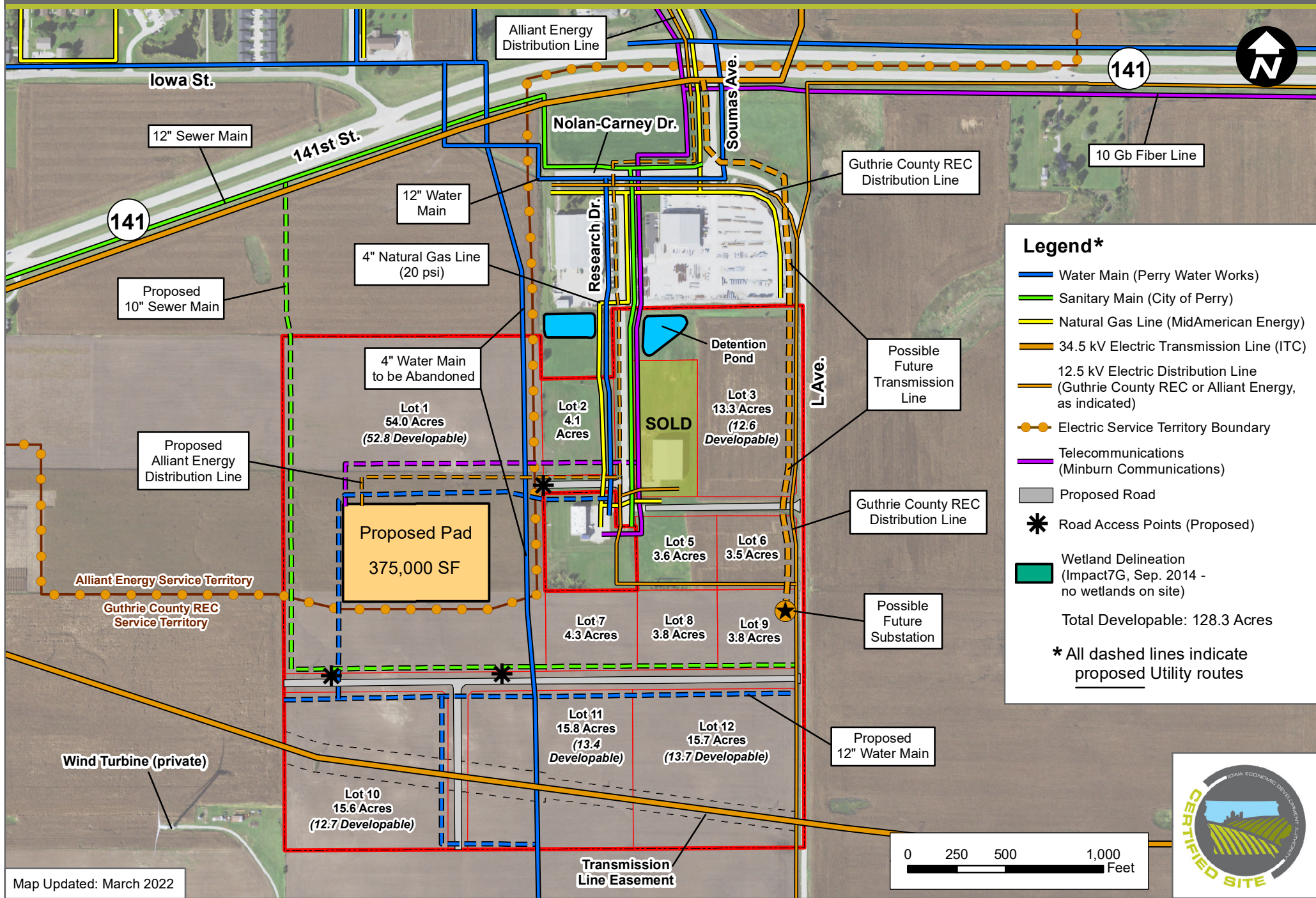


PERRY INDUSTRIAL PARK (156.06 ACRES)

PERRY, IOWA - MASTER DEVELOPMENT PLAN



Legend*

- Water Main (Perry Water Works)
- Sanitary Main (City of Perry)
- Natural Gas Line (MidAmerican Energy)
- 34.5 kV Electric Transmission Line (ITC)
- 12.5 kV Electric Distribution Line (Guthrie County REC or Alliant Energy, as indicated)
- Electric Service Territory Boundary
- Telecommunications (Minburn Communications)
- Proposed Road
- ✱ Road Access Points (Proposed)
- Wetland Delineation (Impact7G, Sep. 2014 - no wetlands on site)

Total Developable: 128.3 Acres

* All dashed lines indicate proposed Utility routes

Map Updated: March 2022

